

PROFILO ANGOLARE IN ALLUMINIO PER SUPERFICI PIANE

ALUMINUM CORNER PROFILE FOR FLAT SURFACES

ART: PR331

Destinazione d'uso | *Use:*

Interni | *Indoor*

Installazione | *Installation:*

Fissaggio Parete / Plafone
Wall / Ceiling fixing

Trattamento | *Processing:*

Ossidazione chimica
Chemical oxidation

Corpo / Struttura | *Body / Structure:*

Estrusione di alluminio
Aluminum extrusion

Fissaggio | *Fixing:*

Staffa fissa in acciaio | *Fixed steel bracket*

Diffusore | *Diffuser:*

Schermo opale / schermo tondo opale (non incluso)
Opal cover / opal rounded cover (not included)

Classe Isolamento

Insulation Class: Classe I | *Class I*

Grado IP | *IP rating:* 20

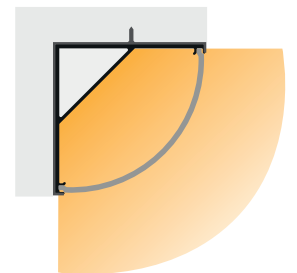
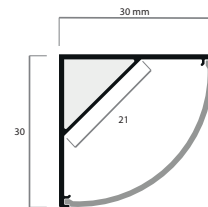
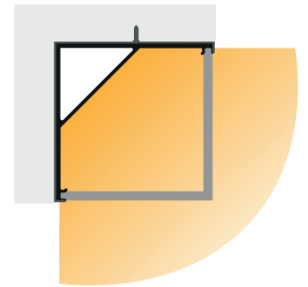
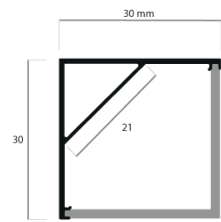
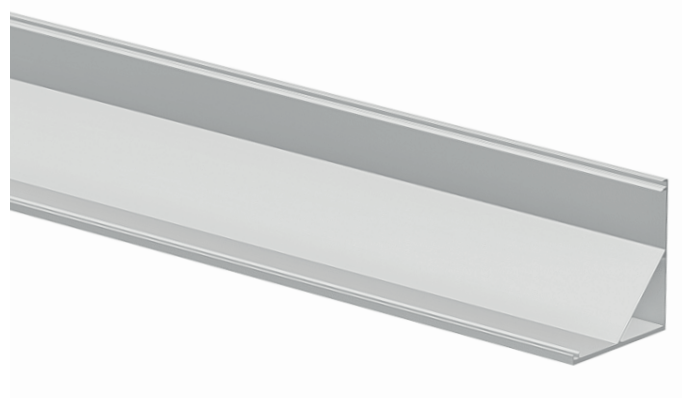
Lunghezza | *Length:* 2 mt

Materiale | *Material:* Puro Alluminio 99.9%
Pure Aluminum 99.9%

Dimensioni | *Dimensions:* 30 mm x 30 mm x 2000 mm

Può dissipare fino a

Power dissipation up to: 28 W/mt



Novità: Nuovo schermo curvo
News: New curved cover

