

MTT-IR

INFRARED PUSH BUTTON

The MTT-IR request to exit or switch with infra-red technology provides contactless features allowing relay activation by hand's waving.

This product reduces usual situations when a user normally needs to be physically in contact with the device, helping to safeguard against the spread of germs on surfaces thus protecting people's health.

The detection IR field is adjustable allowing set-up to its purpose. The integrated buzzer and status LED are activated by default and could be deactivated if discretion is needed.



FEATURES

- Mounting: Surface Mount
- Housing: ABS
- Colour: Black or Black/Silver
- Sensor front area: Acrylic
- Sensor type: Infrared
- Resin potted electronics
- Detection field: 6 cm
- Detection field adjustment: by dipswitch
- Relay contact: NO/NC, 24V AC/DC, 1A
- Relay operation: Pulse Mode (1, 3, 5, 10, 20, 30, 60 seconds) or Latch Mode (ON/OFF).
- Free LED: programmable by dipswitch (auto) or external control using the read and green input.
- Externally controlled LED in red, green, orange.
- Buzzer: ON/OFF dipswitch
- Current Consumption: <50 mA

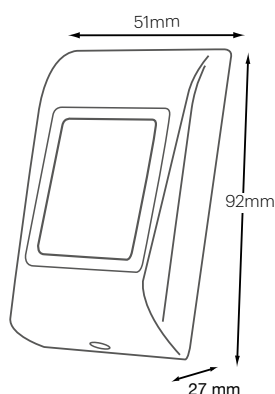
OPTIONS

- OSDP protocol possible with firmware upgrade on request only.
- Tamper protection

MECHANICAL CHARACTERISTICS

- IP rating: IP65
- Operating temperature: -20°C to +50°C
- Operating humidity: 5% to 95% RH without condensation
- Weight: ~0.17 kg

DIMENSIONS



BACKLIGHT LED

Green
Relay ON

Red
Stand by



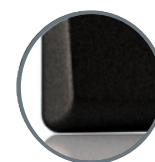
APPLICATIONS

Ideal for access control or switching applications when additional increased hygiene is required: hospitals, clinics, food industry, school canteen, toilets,...

VERSIONS



MTTS-IR
Silver - ABS



MTTBK-IR
Black - ABS